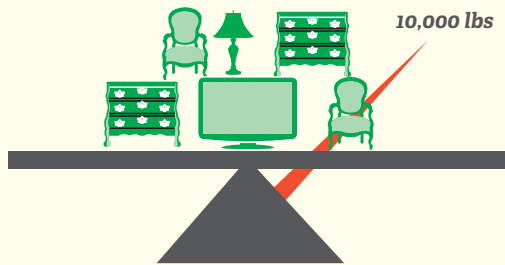


Protecting your personal belongings during your move is as important to you as it is to us. That's why Mayflower offers a plan to protect you if the unexpected happens to your personal items during your move. It is easy to understand, and it's included upfront with every Mayflower move.

# Full-Value Protection

## Here's how it works:

The default amount of full-value protection is automatically included with your move using the estimated weight of your total shipment.

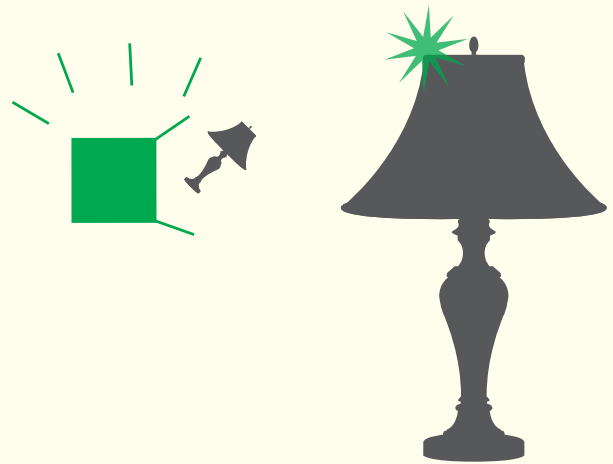


**\$6 x 10,000 lbs = \$60,000**

The protection amount is calculated at a rate of \$6 per pound multiplied by the estimated weight of your total shipment. For example, Mayflower will offer \$60,000 in shipment protection for a 10,000 pound shipment.

## During your move:

If we cause damage or loss to any of your personal belongings they will be either repaired or replaced up to the total amount of the shipment protection that you select.





## High Value Inventory

Included with Full-Value Protection is the High Value Inventory Form. This form must be used to list any items valued greater than \$100 per pound. It's important that each item being moved is carefully considered by you with this in mind. So if an item has a value beyond \$100 per pound, be sure to list the item on the High Value Inventory Form.



## Without High Value Inventory Completed

 = 2lbs x \$100 = 

## With High Value Inventory Completed

 = 

As you can see, your use of the High Value Inventory Form assures you the full benefit of your Full-Value Protection for your valuable items.

At Mayflower, we understand that moving can be a stressful time, let Full-Value Protection help ease your mind. Please refer to the Mayflower website, [www.mayflower.com](http://www.mayflower.com), for complete details on Full-Value Protection and all of our shipment protection offerings.